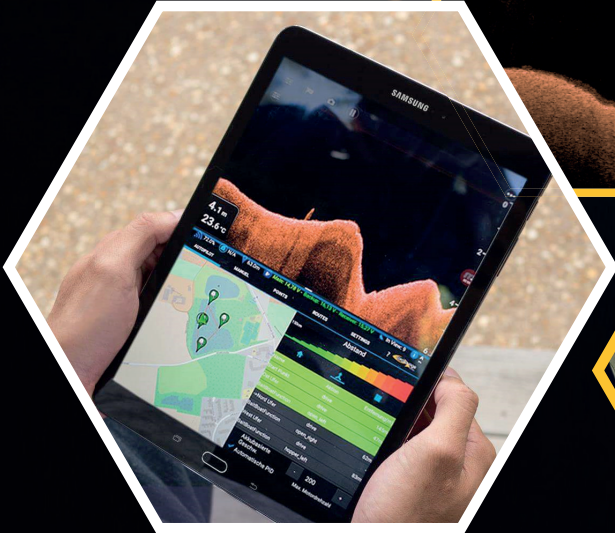


RT4 Autopilot Raymarine® V3

carplounge
tackle



NEW RT4 AUTOPILOT V3 RAYMARINE

“

Carplounge dropped a bomb in early October with the long awaited new RT4 set. The new RT4 Raymarine Autopilot All-in-Set with 3D Mapping comes with the by far best wireless Echosounder for bait boats - the Raymarine Wifish in combination with the famous Carplounge autopilot in parallel on a 10" tablet. Live-mapping in HD quality directly into the App is now also possible! It never was so easy to generate live high detailed 3D underwater depth-maps.

A laptop at the water -as you need with other mapping systems- in not necessary anymore! The extreme demand at Carplounge gives right to the Development department - at present there are more than 200 RT4 Sets with this Setup into the production at the Baitboat manufacture no. 1!

CnF-18 - Magazine/Page142

”



RT4 RAYMARINE AUTOPILOT WITH 3D HD MAPPING - ALL IN ONE 10" TABLET!

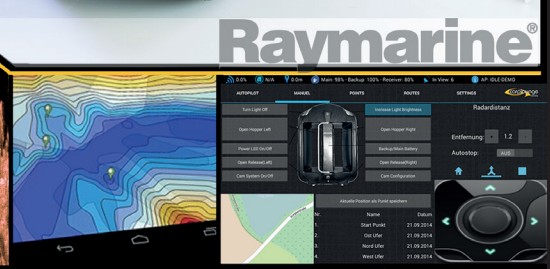
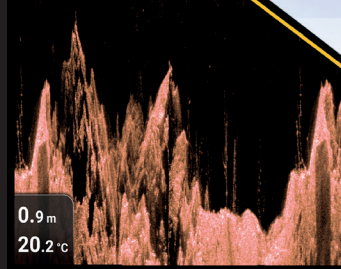
SET CONTENT:

- RT4 bait boat
- With 36 months warranty
- Carbondesign
- GPS Autopilot System V3
- With Backupsystem and 2* Lilon Battery
- Wireless Fishfinder: builtin Raymarine WiFish with repeater (range: 400-600m)
- With built in constant Poweradapter
- Professional Robbe LiPo charger with 220V and 12V car adapter
- Free Mobility guarantee, Carbon Coating, manual.
- Bluetooth Autopilot Transmitterbox, with New Version Tableholder
- Incorporated 12V Lilon accumulator
- Charger
- Tripod

*Android Tablet/Phone with Bluetooth is required.

RT4 Raymarine-AP-Set

Designed
developed and
Handmade in Germany



CONFIGURATION

CONFIGURE YOUR BAITBOAT ACCORDING TO YOUR WISHES!

On our website, you can put together your dream Baitboat according to your needs: you can choose which remote you want to have built in, whether you want to have an extremely quiet engine or rather extremely strong brushless engines and much more. So your RT4 will be tailored perfectly to your needs!

Vollautomatische Steuerung, stabile Hochleistungs-Karbon-Verkleidung
regulär 3470,00€ - special offer: 2899,00€!

Zur Wunschliste hinzufügen aktuelle Konfiguration

Design * →
Carbondesign mit Bootsackversiegelung (▼

RT4 Emblem Farbe * →
Carpplounge Gelb ▼

Baitboat Steuerung * →
GPS Autopilot V3 - 868MHz Longrange + ▼

Raymarine WiFiSH CHIRP * →
eingeb. Raymarine WiFiSH mit Repeater (f ▼

Raymarine - Autopilot Mapping -NEU! * →
ohne Mapping - Kann später per Software ▼

Tablet * P▼
ohne Tablet (spätere installation bei Carploung ▼

Motoren * P▼
2* extra leise brushed Motoren mit 50A-Rc ▼

Backupsystem * →
mit Backupsystem und 2* 6,6AH LI-Ion Ak ▼

Ultraschall- Abstandswarner * →
ohne (kann spaeter noch nachgeruestet w ▼

Bait Spirals - Futterschnecken * →
ohne BaitSpirals ▼

Tasche * →
mit dick-gepolsterter Tragetasche Baitboat ▼

Funk Kamera System * →
ohne Cam (kann spaeter dazu bestellt wei ▼

Zahlungsart * →

NEW VIDEO ON YOUTUBE

Excited about our new RT4 Autopilot V3 Raymarine?



Please watch the latest movie on YouTube:
<http://bit.ly/RayApVideo>



ALL-ON-ONE 10" CONTROL

"done! Our developers have now succeeded in adapting the raymarine app and the carplounge autopilot app to control the RT4 baitboat on a 10 Tablet Parallel! Previously, it was not possible to use 2 active apps with normal split-screen tools."



10 "TABLETS: ALL IN ONE" VIEW NEW!

Through a special software adaptation of our technicians the autopilot app can now run synonymous with the Raymarine (depth sounder) app on the big 10 "tablet! Of course you can run the autopilot app only or just the Raymarine (Echosounder/ Fishfinder) in landscape mode and use the big 10" Screen to displayed in full screen!

YOU ALREADY HAVE A 10 "SAMSUNG TABLET?

Use our installation and configuration service: Just send us your tablet within 2 weeks after you have placed the order or bring it with you at the pickup date. Our technicians then install all the necessary apps and set up your RT4 .

ORDER SAMSUNG GALAXY TAB A 10" TABLET DIRECTLY (RECOMMENDED)

Now simply order the tablet via our configurator - You get a brand new black Samsung Tab A 10 " - Completely installed and configured on your boat at our test lake!

UPDATES AND IMPROVEMENTS ON A REGULAR BASES

The possibilities and intuitive Control concept of the new autopilot system will on medium term replace the normal remote controls on our BaitBoats. There for the free App (downloadable via Google Play Store) will be further developed and extended. With automatic updates we offer a fast way to add customer wishes, changes and extensions! The autopilot app gets (as usual on Tables/Smartphones) automatically updated.



ALL-ON-ONE 10" CONTROL



NEW: MASTER & SLAVE MODE

As soon as you switch on the remote control, the remote control immediately takes control of the boat.

When the remote control is off and the tablet is about to start an autopilot ride, the tablet is master and controls the boat until the route is finished, the route was stopped by user, or the remote control is turned on.

TRANSMITTERBOX

The transmitterbox is mounted on the included tripod. Incorporated is a directional radio antenna which guarantees stable coverage over 1000+ meter with the new Autopilot V3 Hardware and an internal 12V Lilon accumulator with 6600mAh which ensures runtimes up to 18 hours!

Additionally an external accumulator with an range of 6V to 20V can be connected (for example: 12V Lead or 4S Lipo/Lilon accumulator) to increase the runtime even more. A super fast 2 Port USB 3.0 charge connector gives the opportunity to charge the Tablet/Phone and other USB devices with up to 5A!

NEW: OPTIONAL ULTRASONIC DISTANCE CONTROL

The RT4 Autopilot can be equipped with an detachable ultrasonic distance control.

It prevents the boat to make a collision with obstacles or getting trapped in snags or bushes.

The Auto Stop function will automatically stop or reverses the boat when an obstacle such as banks, trees, snags etc. is detected in less than 80 centimeters.

On the Autopilot app you can see a warning bar when an obstacle is coming nearby within 2 meters.

ALL-ON-ONE 10" CONTROL

AUTOPILOT CONTROL WITH THE CARPLOUNGE APP

Instead of using a normal remote control the Carplounge Autopilot uses a Android Tablet/Phone. The required software can be downloaded for free from the Google Playstore and supports every Android device with an Bluetooth interface.

The Tablet connects via Bluetooth to an Transmitterbox to the BaitBoat and offers complete control over the BaitBoat with an intuitiv Touchscreen interface.

The manual mode offers normal functions as driving and action trigger but also improved as driving with auto-heading. Position, course and heading (compass funtion!) of the BaitBoat are mapped in real time. Good spots, which for example where discoverd with the sonar can be saved as geolocations and named with intuitiv names like "ridge left" "spot 1" "home" etc.

The autopilot mode offers to combine these spots with the according actions (open left hopperdoor / open right hopperdoor / open left release / open right release / turn on light / etc.) into routes which then can be processed fully automatic. Screen to display in full screen!



ALL-ON-ONE 10" CONTROL

AUTOPILOT EXAMPLE:

Drive to position "spot 1" and open right hopperdoor when arrived 2.) drive to position "ridge left" and open left hopperdoor when arrived 3.) drive back to the "home" position and flash lights one time.

The boat can now be filled with the rig and baits to drive the route or an other again. An almost infinite amount of spots and routes can be saved.

With extremely precise measures like tilt and acceleration sensors combined with leading edge GPS and Compass-technologie a absolute precise control of the Boat, with an accuracy of less then 30cm in over 90% of all GPS recieving conditions. Also the string rigging during drive espeacially for deploying 2 rods at the same time at different spots is managed intelligent:

If the tension on one or both Rods is increased the integrated electronics will recognize and compensate this. This way the BaitBoat will allways drive in straight lines between spots without driving arcs and creating string bows.

The Autopilot replaces the normal remote control for the BaitBoat. Even tough we can offer the possibility to combine an normal remote control with the Autopilot. This way you can choose if you prefer to control the Boat with your Tablet or your old fashioned remote control.

The App can be used on any Bluetooth capable Android Tablet/Phone. At the moment our App is optimized on 7-inch Tablets, but support for 4 inch to 10 inch Tablets/Phones will be added soon.



CARPLOUNGE GPS AUTOPILOT V3 - MAPPING WITH RAYMARINE



HIGH RESOLUTION 3D MAPPING HAS NEVER BEEN EASIER!

Don't want to take a laptop with you to the Lake? Our development department has succeeded in a further feature that does not exist anywhere else!

For our customers, it is now possible to record live mapping data (Position and Depth) directly into a file on the tablet in combination with the Raymarine Wi-Fish and the position data from the Autopilot tracks.

There is no additional apps or paid mapping software necessary!

The Carplounge Autopilot app reads the depth data of the Raymarine Wi-Fish echo sounder live and in full bandwidth. So the Raymarine app does not even have to be started for mapping!



BATHYMETRY HD DEPTH MAPS

In contrast to other mapping systems, we can now process the high-resolution depth data live in real-time through direct access to the Raymarine sonar by the Carplounge app.

Due to the significantly more frequently updated and more accurate data, much less interpolation is required, which brings the accuracy of the depth map to industry standard!

Due to the more detailed depth data, bathymetry depth maps can be generated in the Carplounge Autopilot App, which show even the smallest in-depth unevenness through precise edges precisely and clearly!



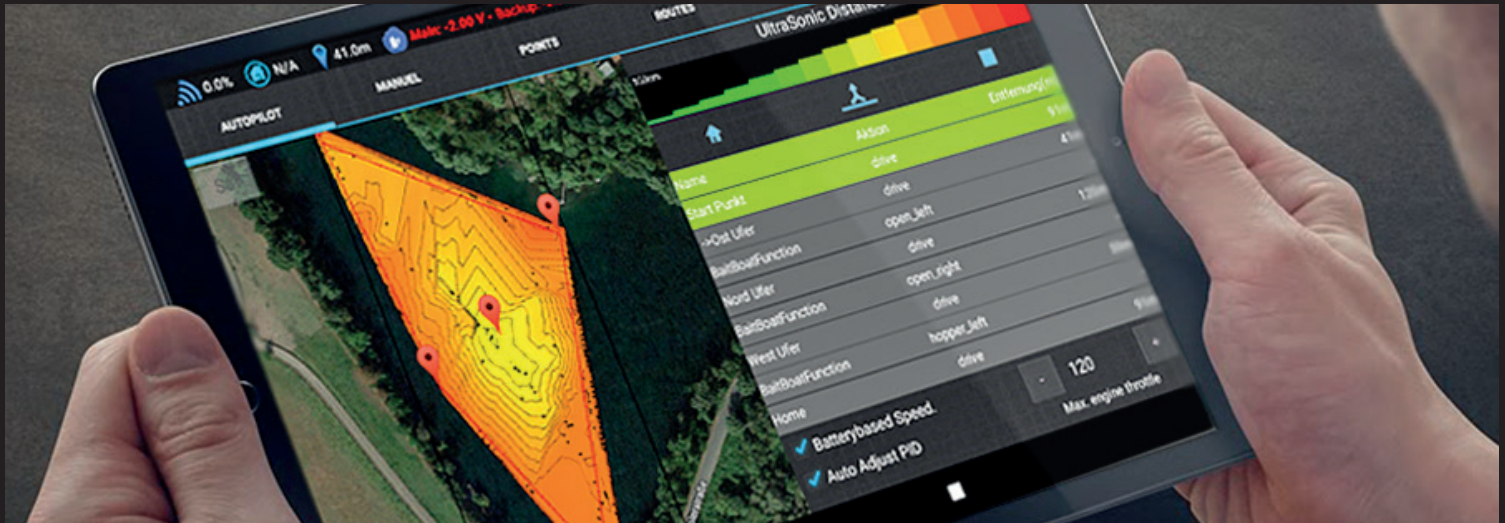
AUTOMATIC CORRECTION OF WRONG DEPTH AND POSITION DATA

For all mapping systems, sometimes for a few seconds there may be incorrect measurements in depth or position.

These incorrect measurements distort the depth maps and can only be cumbersome e.g. be removed via Reefmaster. Again, our system is far ahead of us:

With the auto-correction, our developers have solved the problem - implausible depth or GPS logs can be automatically detected from the data and removed! The post-processing time of several hours for deleting manually as with other mapping systems is therefore completely eliminated!

CARPLOUNGE GPS AUTOPILOT V3 - MAPPING WITH RAYMARINE



EVEN MORE COMFORTABLE WITH THE NEW LIVE 3D MAPPING

New mapping upgrade! Download the latest App Version and Try it! The new "Points via map" view has been revised for the 3D mapping and extended with new features!

EASY MAPPING - JUST PRESS RECORD THATS IT!

The track recording can now be started at any time - regardless of whether in remote control mode, in manual tablet mode or now in the automatic route!

TRADE MAPPING OR SHARE MAPS WITH OTHERS

The created depth maps as well as the individual tracks can easily be exchanged with other systems. In this way, areas can be mapped together with other boats and later be generated to a total map.

NEW FUNCTION: AUTORASTER

The perfect upgrade for large areas! simply tap an area in the app where you want to map.

When closing the surface, the automatic grid can be set! This means that even large surfaces can be mapped absolutely precisely and fully automatically.

SHALLOW WATER WARNING AND AUTOSTOP FUNCTION

At a water depth of 0- 0.5 meters, the autopilot will now issue a shallow water warning. In addition, the auto-stop function can now be activated for all automatic routes (recommended). In shallow water, close to banks or on sandbanks, the boat automatically stops to control it by hand, optimally protected!

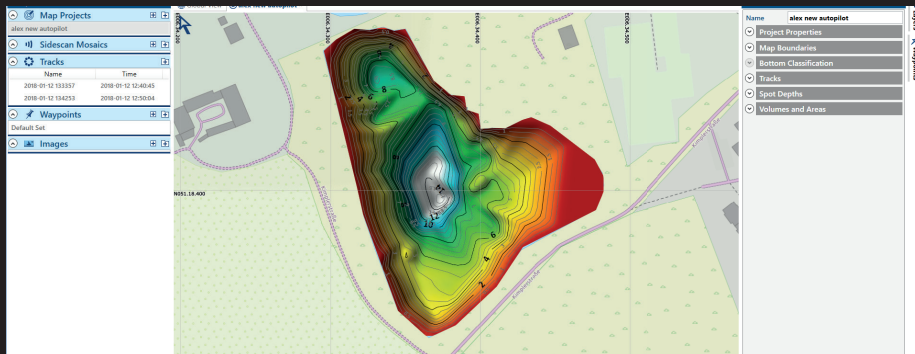
NEW FUNCTION: "TAB 2 MAP"!

With the new tap point function, new points can be created simply by tapping on the (depth) map and the points are automatically approached by the boat. The points are automatically traversed at the start of the route in the selected series of ranks. Very suitable eg. for automatic driving at the shore.

CARPLOUNGE GPS AUTOPILOT V3 - MAPPING WITH RAYMARINE

EDIT KML FILES WITH OTHER MAPPING SOFTWARE

The recorded mapping data can also be exported into all other mapping software such as Reefmaster through the standardized NMEA format. The Depthmaps from Reefmaster can finally be saved back on the Tablet as a KML overlay file.

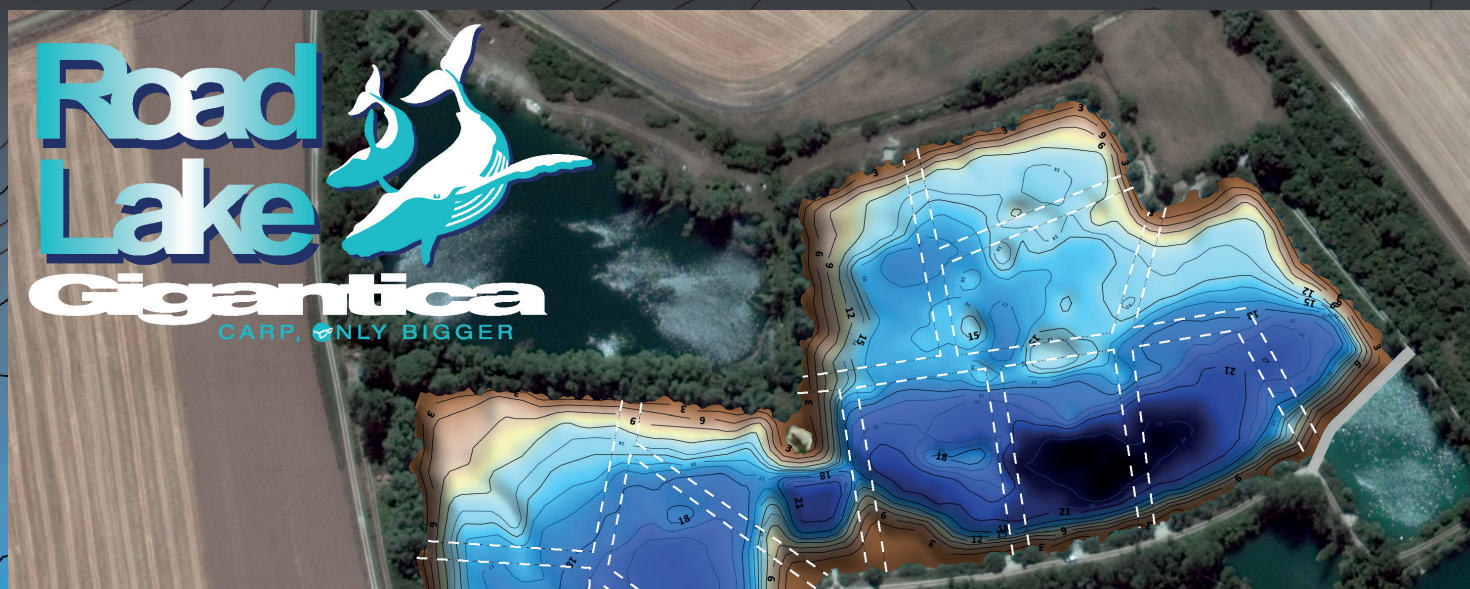


UPGRADE LATER MAPPING? NO PROBLEM!

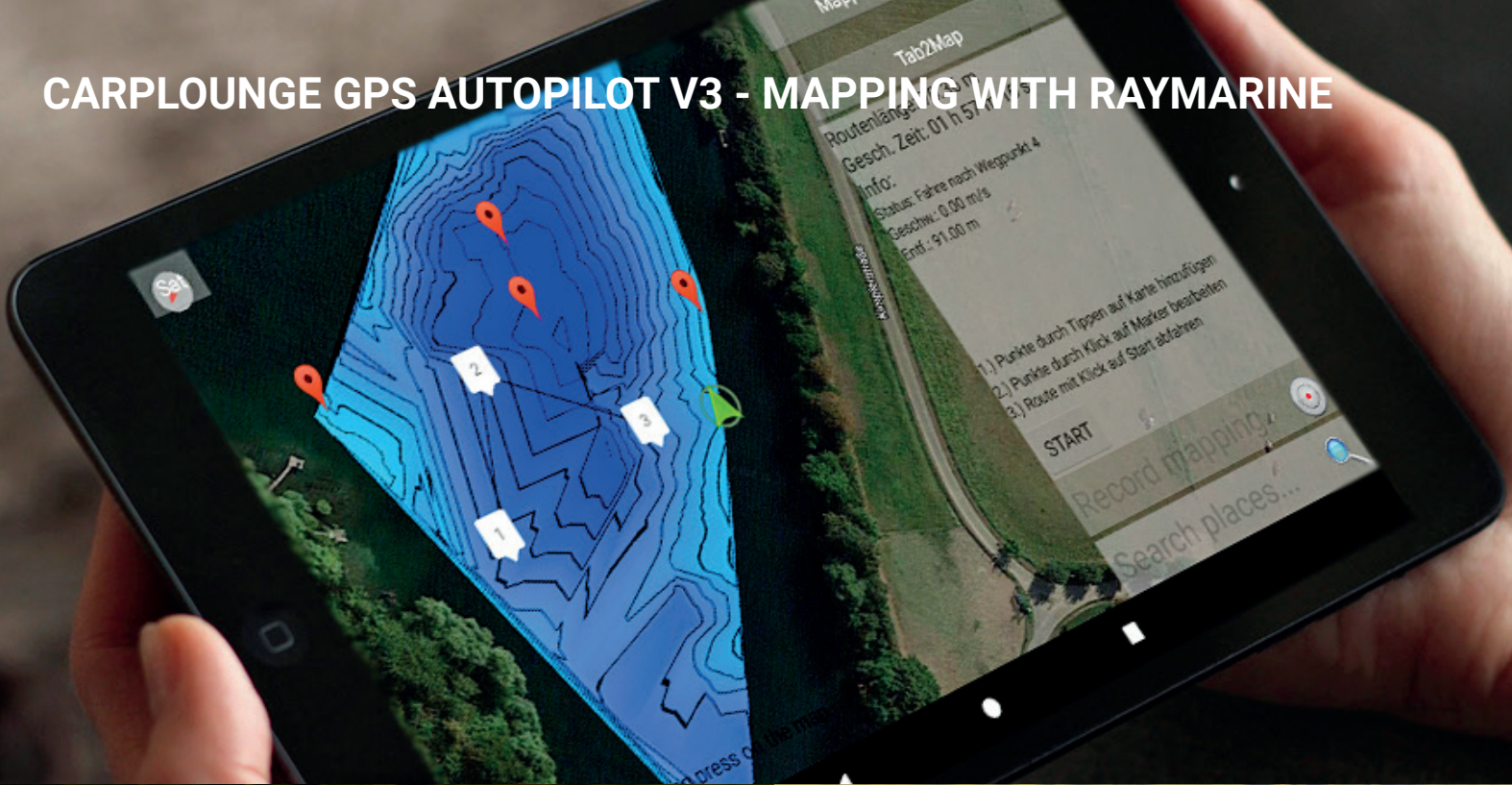
The hardware of the RT4 Raymarine autopilot set is already equipped with the necessary mapping hardware as standard, the mapping function can be installed at any time simply by means of a software key. The boat does not need to be sent!

If you have received your tablet from us and have activated the mapping option, all settings are already configured!

For the use of the "Live 3D mapping" we recommend modern Tablets as the Samsung Tab A 10" we use/recommend due to the required computing power.



CARPLOUNGE GPS AUTOPILOT V3 - MAPPING WITH RAYMARINE



EXAMPLE MAPPING:

1. Start the recording at the bottom right of the screen (Record Button)
2. Then drive off the water, with the autopilot or manually with the remote control.
3. The already driven route is displayed in real time on the map
4. Stop recording by clicking on the Stop button

Several single Tracks can later be combined to a total Map

The selected overlays remain selected after a single selection and are then available in all existing views.



THE NEW AUTOPILOT-RAYMARINE TRANSMITTER BOX

THE NEW AUTOPILOT-RAYMARINE TRANSMITTER BOX

Contains an internal battery for electrical supply. The current battery status is displayed as "Battery 3" in the Autopilot app. In addition, a too low operating voltage is signaled by the red battery warning LED. The range of the Bluetooth connection between the box and the tablet is usually max. 3-5m.



EXTERNAL POWER SUPPLY

In addition to the internal voltage supply you have the possibility to connect an external battery with the box. The battery port of the transmitter box supports batteries with 12-18 Volt supply voltage, as well as your Boat batteries (4S Lipo / Lilon).

USB PORTS

Charger The transmitter box has 2x high-speed USB connections, which allow you to charge up to 2. USB devices in parallel.

ANTENNAS USED ON TRANSMITTERBOX

2.4 Ghz (left) - 2.4 Ghz (right) - GPS (middle) 868Mhz GPS

STATUS-LEDS TRANSMITTERBOX (BOOSTER)

In addition to the existing autopilot status LEDs, the transmitter box has the 3 status LEDs on the top: Power, Con and Ready.

STATUS-LEDS TRANSMITTERBOX (AUTOPILOT)

You can use the LEDs to identify the current system status at any time.



THE NEW AUTOPILOT-RAYMARINE TRANSMITTER BOX



COMMISSIONING

With the new V3 autopilot hardware you can now switch at any time between the remote control and the tablet back and forth.

CHARGING THE INTERNAL BATTERY

At the bottom of the transmitter box there is a charging socket for charging the internal battery.

TRIPOD FOR TRANSMITTERBOX

We recommend to use the tripod, which is part of the Set, during operation. The increased height of the transmitter box contributes to an increase in range and increases the quality of the radio connection.

TOGGLE SWITCH

The transmitter box has a toggle switch with 3 positions, which controls the type of power supply and the switch-on state.

NEW: MASTER & SLAVE MODE

As soon as you switch on the remote control, the remote control immediately takes control of the boat.

When the remote control is off and the tablet is about to start an autopilot ride, the tablet is master and controls the boat until the route is finished, the route was stopped by user, or the remote control is turned on.

FOX CAMO.LITE
carplounge
tackle

**New: FOX RT4
Rucksack**



save 25% discount! - www.carplounge.de



Designed,
developed and
Handmade in Germany

RT4 Raymarine-AP-Set

FOX CAMO LITE
carplounge
tackle



CONTACT AND SERVICE

Carplounge Tackle
Hanns-Martin-Schleyer-Straße 33
47877 Willich, Germany

Phone: +49 (0) 2154 88482-0
Fax: +49 (0) 2154 88482-20
Email: shop@carplounge.de